

10G SCREWS @ MAX
600MM CTS, 8G
SCREWS @ MAX 400MM
CTS

IF TIMBER FRAMING IS
LESS THAN 30MM DEEP,
USE NYLON ANCHOR
TO FIX TO 30MM MIN
DEPTH INTO CONCRETE

TIMBER SHOWN IS
INDICATIVE ONLY. SEE
STRUCTURAL PLAN
FOR TIMBER LAYOUT

ALL SCREWS INTO
TIMBER ARE TO HAVE A
MINIMUM DISTANCE TO
EDGE OF TIMBER OF
15MM

PANELS BIGGER THAN
2.9 SQM REQUIRE
STRATCO ACP
STIFFENERS AT MAX
500 MM CTS

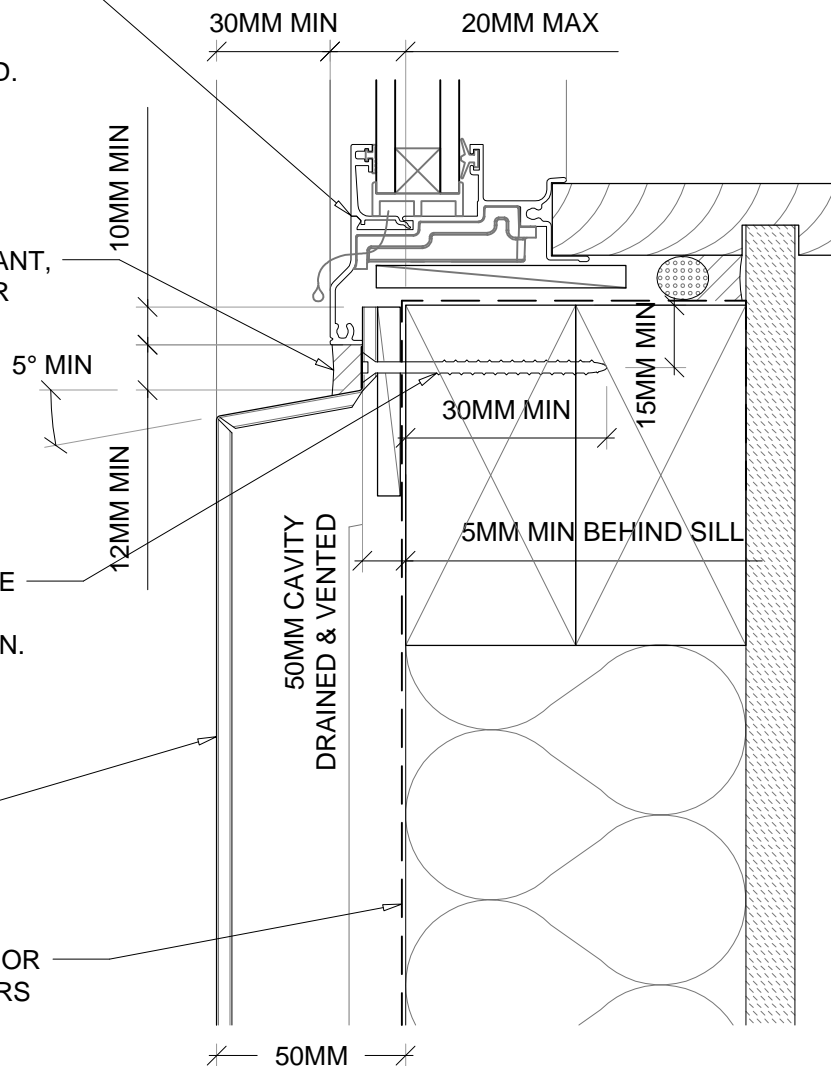
WINDOWS INSTALLED &
FLASHED BY OTHERS,
BEFORE ALUMINIUM
COMPOSITE INSTALLED.

SIKA AT FACADE SEALANT,
TROWLED FINISH OVER
PEF ROD BY STRATCO

ALUMINIUM COMPOSITE
PANEL TAB FIXED TO
BUILDING BY 10Gx2" MIN.
SS CSK SCREWS. BY
STRATCO

4MM ALUMINIUM
COMPOSITE PANEL BY
STRATCO

WALL UNDERLAY, RAB OR
AIR BARRIER BY OTHERS



D2.03 RESIDENTIAL WINDOW SILL

D2.03 RESIDENTIAL WINDOW SILL

SCALE: 1:2 @A4



JOB NAME: TBA
CONTRACTOR: TBA
JOB# NA QUOTE# NA

FILE: SEALED JOINT SYSTEM DETAILS 2017
DATE: 2017-08-07
DRAWN: AR