

## QUICK SCREEN

COMPLETE KIT READY TO GO



- **Height and width adjustable**  
Cut to desired size
- **Slat spacing easily adjusted**  
Spacer blocks included
- **Clean finish**  
Screw fixings hidden by snap on cover
- **Complete kit includes:**  
65mm aluminium slats, side frames, snap covers, caps, spacer blocks & screws
- **Easy, quick assembly!**

### QUICKSCREEN RANGE:

**1800mm W x 1200mm H Complete Kit**

See code list below for order codes

Includes: 2x side frames with snap-on cover, 16x 65mm slats, 2x top caps, spacer blocks & screws

**2400mm W x 1800mm H Complete Kit**

See code list below for order codes

Includes: 2x side frames with snap-on cover, 24x 65mm slats, 1x mid rail, 2x top caps, spacer blocks & screws

**Full Post**  
1800mm or 2400mm  
Includes free top cap

See code list below for order codes

**Base Plate Set**  
4x screws included

Suits standard full posts  
See code list below for order codes

**Dress Ring**  
Fits over full post

Must be special ordered by customer

**Top Cap**  
For side frame - Nylon

See code list below for order codes

**Side Frame**  
With snap-on cover

2100mm long

See code list below for order codes

**Trade tip!**  
Use side frames to create more screens with offcuts or unused slats from Quickscreen packs

### COLOURS:

Australian Interpon Powder Coat

- Black**  
GN150A
- Primrose**  
GD037A
- Woodland grey**  
GL205A
- White**  
GA078A

### ORDER CODES:

#### QUICKSCREEN KITS:

- HB-4589 (1800x1200 kit - black)
- HB-4590 (1800x1200 kit - primrose)
- HB-4591 (1800x1200 kit - w/grey)
- HB-4592 (1800x1200 kit - white)
- HB-4593 (2400x1800 kit - black)
- HB-4594 (2400x1800 kit - primrose)
- HB-4595 (2400x1800 kit - w/grey)
- HB-4596 (2400x1800 kit - white)

#### QUICKSCREEN POSTS

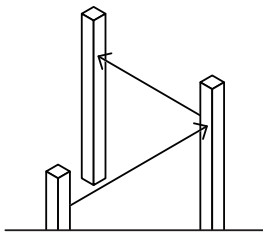
- HB-4624 (1800 post - black)
- HB-4625 (1800 post - primrose)
- HB-4626 (1800 post - W/grey)
- HB-4627 (1800 post - white)
- HB-4628 (2400 post - black)
- HB-4629 (2400 post - primrose)
- HB-4630 (2400 post - W/grey)
- HB-4631 (2400 post - white)

#### ACCESSORIES

- HB-4641 (BP set - black)
- HB-4642 (BP set - primrose)
- HB-4643 (BP set - W/grey)
- HB-4644 (BP set - white)
- HB-4649 (Side frame - black)
- HB-4650 (Side frame - primrose)
- HB-4651 (Side frame- W/grey)
- HB-4652 (Side frame - white)



# QUICKSCREEN ADVANTAGES



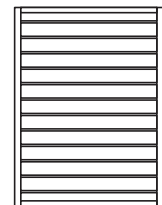
## INSTALL SCREENS OFF ANGLED POSTS

For example, post on a 45 degree angle. This is easily achieved by cutting the tips of the blades on an angle so they fit into the frame for fixing.



## 10 YEAR POWDERCOAT WARRANTY

Quickscreen uses the highest quality Interpon Australian powder coat, providing the end user with a 10 year warranty on the finish. (maintenance conditions apply)



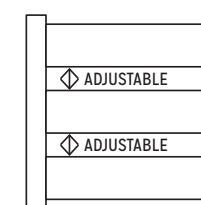
## CUSTOM MADE GATES

Gates go hand in hand with horizontal slat screens. Stratco can supply pedestrian gates to size and flat pack.



## NO ADDITIONAL FIXINGS

Unlike other systems, Quickscreen does not require additional U channels or angles for installation or to handle out of square situations.



## ADJUSTABLE SLAT SPACING

Spacer blocks are included to give a 9mm, 15mm or 20mm slat spacing, however, any spacing is achievable. This adjustability can come in handy when trying to meet specific spacings designated by local councils or to match with existing spacing.

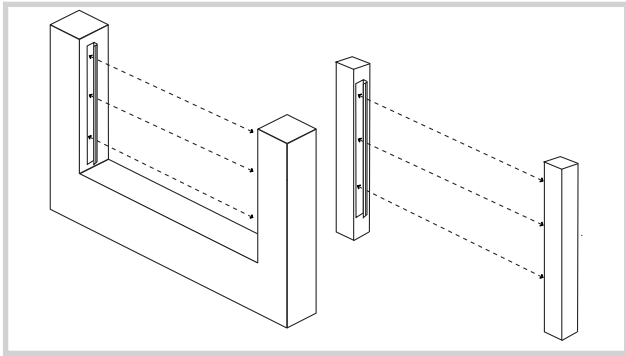


## CHEAPER THAN COMPETITORS

Quickscreen's advantage in the market is its amazing trade pricing. This real saving has been achieved without compromising the quality or integrity of the product.

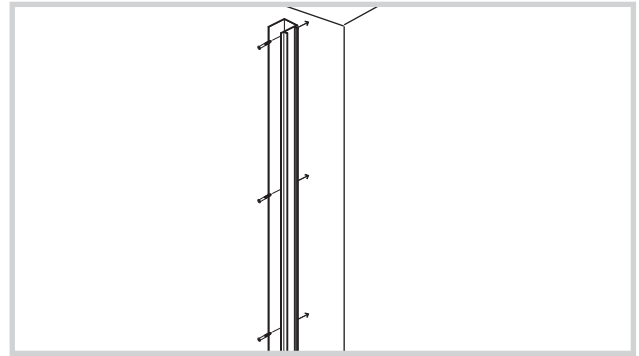


## QUICKSCREEN INSTALL GUIDE



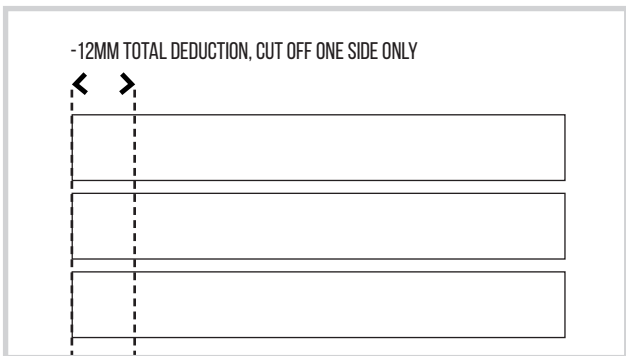
### Step 1

Take measurement between wall or post at 3 points: top, middle and bottom. Take note of the smallest measurement.



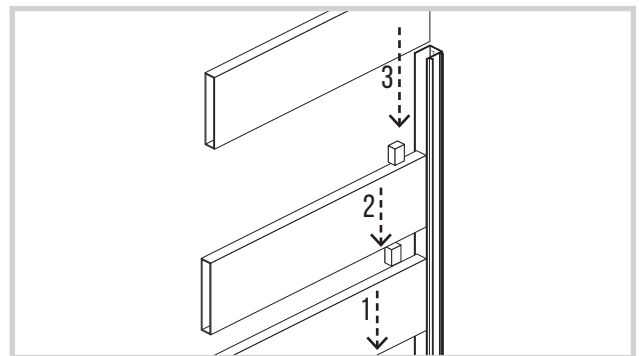
### Step 2

Cut side frames 3mm less than desired height (the 3mm allows for the top cap). Affix side frames to wall or post with appropriate fixings (not included).



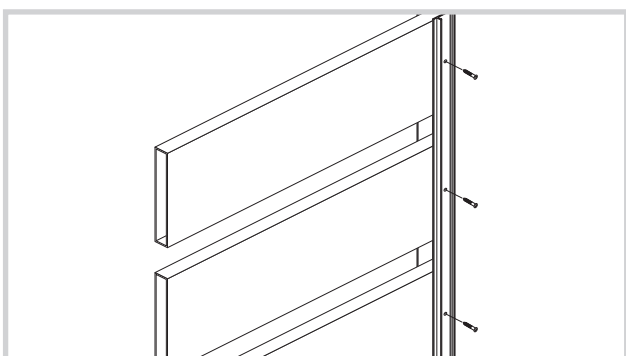
### Step 3

Cut aluminium slats 12mm less than total width of opening. Refer to measurement in step 1. The 12mm deduction takes into account thickness of side frame on both sides of the screen and head of fixings. Ensure fixings holding side frame do not obstruct slats when dropping in. If so, you may need to trim slats further.



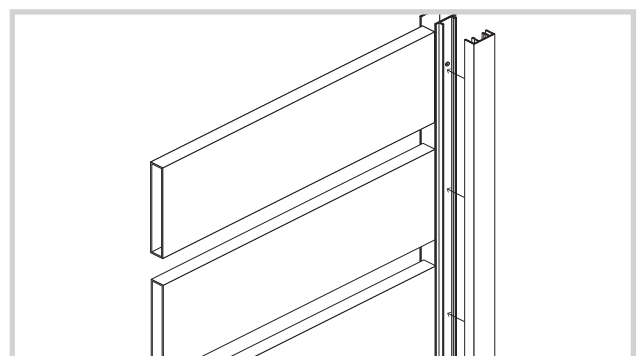
### Step 4

Drop in aluminium slats. Tip: Ensure bottom slat is level & screw off at both sides. Optional spacer blocks provided in kit which can be rotated to achieve a 9, 15 or 20mm slat gap. Any gap can be achieved by leaving a desired space. Consider using timber block spacers to achieve other gaps.



### Step 5

Screw off each slat as it is dropped in ensuring level. If spacer blocks used, remove after each level is installed.



### Step 6

Cut snap on cover to appropriate height. Snap on fixing cover to hide screws. Tip: If screen is wider than 1800mm wide, it is recommended to attach the midrail bar vertically at the centre of the screen. Cut midrail to appropriate height of screen and screw off to each slat at back side of screen

# QUICK SCREEN PEDESTRIAN GATES

## Advantages:

- Flat pack gate kit includes: 65mm aluminium slats, gate side frames, caps & screws
- Width & height adjustable: Simply cut to desired size
- Left or right side opening
- 9mm slat spacing
- Clean finish: Screw fixings are completely hidden
- **NO WELDING REQUIRED!**

**EASY TO ASSEMBLE GATE KIT IN A BOX**

## COLOURS:

Australian Interpon Powder Coat



**Black**  
GN150A  
SC-10049  
QS-GATE-B



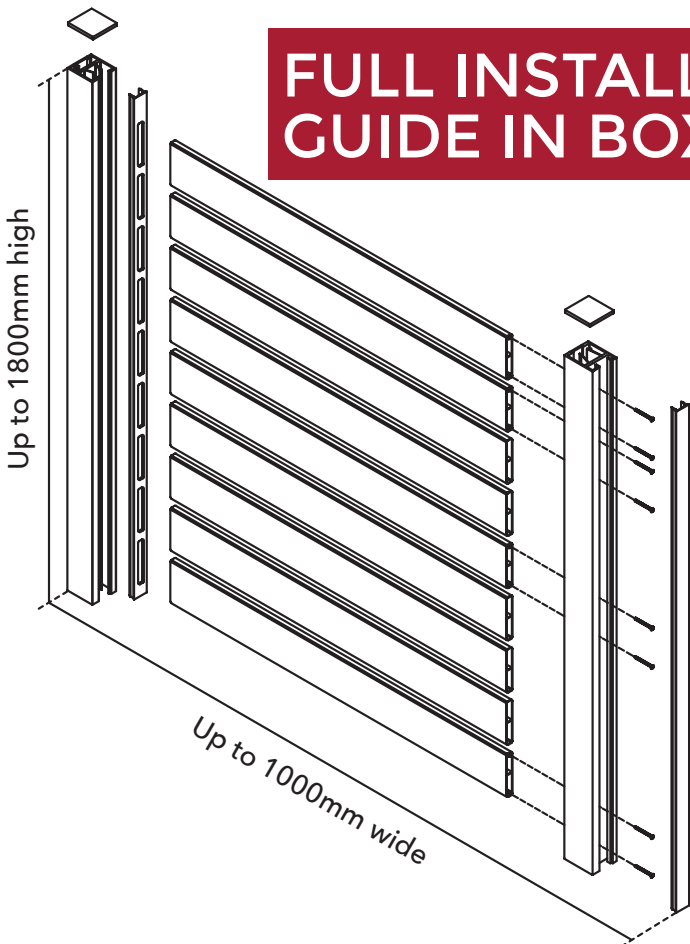
**Primrose**  
GD037A  
SC-1005  
QS-GATE-P



**Woodland grey**  
GL205A  
SC-10050  
QS-GATE-G



**White**  
GA078A  
SC-10051  
QS-GATE-W



**FULL INSTALL GUIDE IN BOX**

## Allow sizes within the range shown below:

\*Finished gate height restricted to gap intervals between slats

